



Academic & Career Success Initiative

Update as of April 1, 2008

(These slides were presented at the Board Meeting on April 1, 2008)



Goal:

To provide as many college and career opportunities as possible to all students.

- Early Implementation of the Initiative
 - College Readiness Efforts
 - Career Technical Education

- Historical District-wide Data

- Approved District-wide 2013 Targets

GOAL:

To provide as many college and career opportunities as possible to all students.

BACKGROUND

- **Summer 2007:** A diverse group of stakeholders recommended a three-part policy to improve college and career readiness.
 1. Enhance the Seamless Education Initiative.
 2. Set clear and comprehensive goals and milestones.
 3. Provide periodic reports on the district's progress.
- **September 2007:** The Board of Education unanimously adopted the recommendations.

Enhance Seamless Education

Inform students and parents of the A-G Requirements and college and career preparation beginning in sixth grade.

Collaborate with LBCC and CSULB to consider the establishment of student benchmarks for guaranteed college admission.

Align higher education initiatives with substantive career technical education programs.



GEAR UP and Comparable Services

- *Implementation:* Staff are now serving 6th graders.
- *Equity:* Services are being provided districtwide.

Parent Coordinators and Community Liaisons

- *Parent Calls:* Nearly 3,500 6th grade parents have been called and notified of available services.
- *Workshops:* Over 15 in March and April alone.
- *Communication Materials:* 40,000 "Every Student, Every Day" editions disseminated via *School News* and others.
- *Events:* Education Celebration, Math Madness, and numerous parent meetings.

Policy and Waivers

- *Course of Study Policy:* Send letters on the A-G Requirements, college admissions, and career technical education to 8th – 12th grade parents.
- *State Waiver:* Use Middle and High School Supplemental Counseling Program for a wider range of students, including 6th graders.

Strengthening our system of services to ensure that families know about all postsecondary options.

Enhance Seamless Education

Inform students and parents of the A-G Requirements and college and career preparation beginning in sixth grade.

Collaborate with LBCC and CSULB to consider the establishment of student benchmarks for guaranteed college admission.

Align higher education initiatives with substantive career technical education programs.



LONG BEACH COLLEGE PROMISE

Goal and Key Players

- "We promise the opportunity of a college education to every student in the Long Beach Unified School District."
- Long Beach Unified School District, Long Beach City College, and California State University, Long Beach.

Key Features

- *Gateway to Greatness*: LBCC commits to providing a tuition-free semester to every LBUSD student (by 2011).
- *Offer of Admission*: CSULB commits to accepting all students who complete minimum college preparatory or transfer requirements.
- *Multiple Pathways*: Supports many different postsecondary plans that may interest students.
- *Seamless Education*: Builds upon a longstanding partnership between LBUSD, LBCC, and CSULB.

"A standard of K-12 / college collaboration that will serve as a model for many other districts nationwide."

-- The Eli and Edythe Broad Foundation

Strengthening our external partnerships to ensure that families know about all postsecondary options.

Enhance Seamless Education

Inform students and parents of the A-G Requirements and college and career preparation beginning in sixth grade.

Collaborate with LBCC and CSULB to consider the establishment of student benchmarks for guaranteed college admission.

Align higher education initiatives with substantive career technical education programs.



CTE Grants for Wilson and CAMS

- Wilson and CAMS received nearly \$250,000 in matching funds for CTE facilities.
- *Wilson Classical High School*: Purchase drafting desks, tools, and other equipment for the Architecture and Construction Program (more than 250 students a year).
- *California Academy of Math and Science*: Purchase engineering and design equipment and tools (about 370 students a year).

Irvine Foundation Grant for Jordan ACE Academy

- Two-year, \$316,000 grant will help ACE students take courses at LBCC and CSULB while still in high school.
- Provide summer school math and science camps.
- ACE teachers will work with LBCC and CSULB instructors to prepare students for college coursework.
- Free college courses, textbooks, and bus passes.

Building upon Existing CTE Programs

- *2006-07*: More than 9,400 students took some type of career-related course throughout the district.

Strengthening our CTE programs to ensure that families know about all postsecondary options.

To support the personal and intellectual success of every student, every day.

The next seven slides provide information about the District's Career & Technical Education (CTE) Programs.

BOARD POLICY 6178

■ **Comprehensive Program**

- Career Awareness and Job Exploration
- Career Counseling and Goal Setting
- Job Skills Development and Work Habits

■ **Integrated Curriculum**

- Present related academic and career materials in a “coordinated and complimentary fashion.”
- Support “the integration of technological education throughout the curricula” to meet all students’ needs.

Association for Career and Technical Education

Smaller learning communities offer a strategy for transforming the American comprehensive high school from its traditional arrangement of college-prep, general, and CTE tracks to a set of self-contained thematic schools which prepare students for both college and careers.

■ 2006 SLC Evaluation Study

- 70% of teachers say that, in SLCs, students receive regular guidance on course selection and college / career planning.
- A number of coordinators urge students to take a career survey to help them select an appropriate SLC.

■ October 2007 SLC Grant

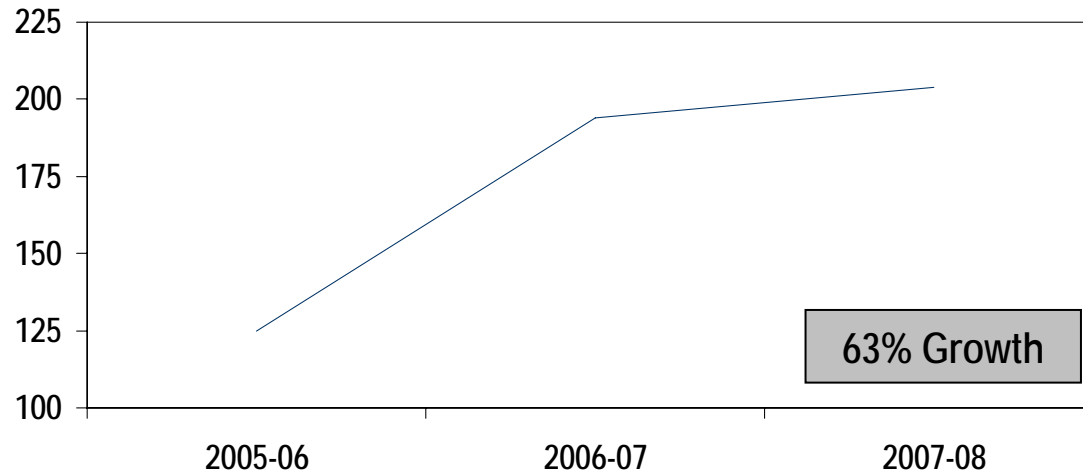
- \$2.5 million from the US Department of Education
- Expand and enhance SLCs at Lakewood and Millikan
- Business, Technology, Science, Global Education, Arts

Virtual Enterprise



- Students build their own businesses.
 - *Rigor*: Overview of microeconomics and macroeconomics
 - *Relevance*: Business operations, technology, and employability skills
- Established in 2001 with 8 students; now it enrolls over 200 districtwide.
- Annual Long Beach Virtual Trade Fair
- Students attend other trade fairs in Bakersfield, San Diego, San Francisco, New York, and even Tokyo.

Districtwide Enrollment in Virtual Enterprise

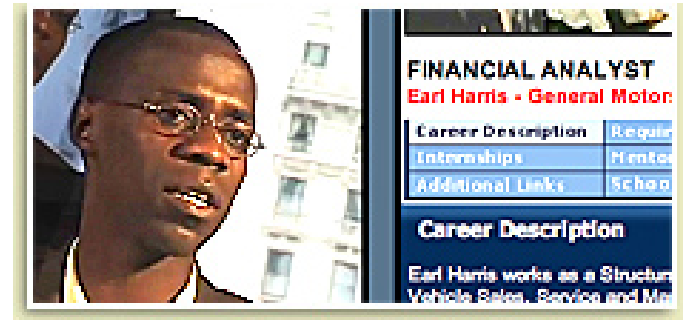


ANNUAL CAREER / COLLEGE EXPLORATION NIGHT

- Hundreds of representatives from businesses, apprentice programs, nonprofits, and colleges provide information.

CAMPUS CAREER CENTERS

- Apprenticeship Information
- Career Exploration Activities
- Internship Opportunities
- Regional Occupation Programs
- Resume Writing Workshops
- Trade / Technical School Information



VIRTUAL JOB SHADOWS

(<http://www.virtualjobshadow.com/lbcc>)

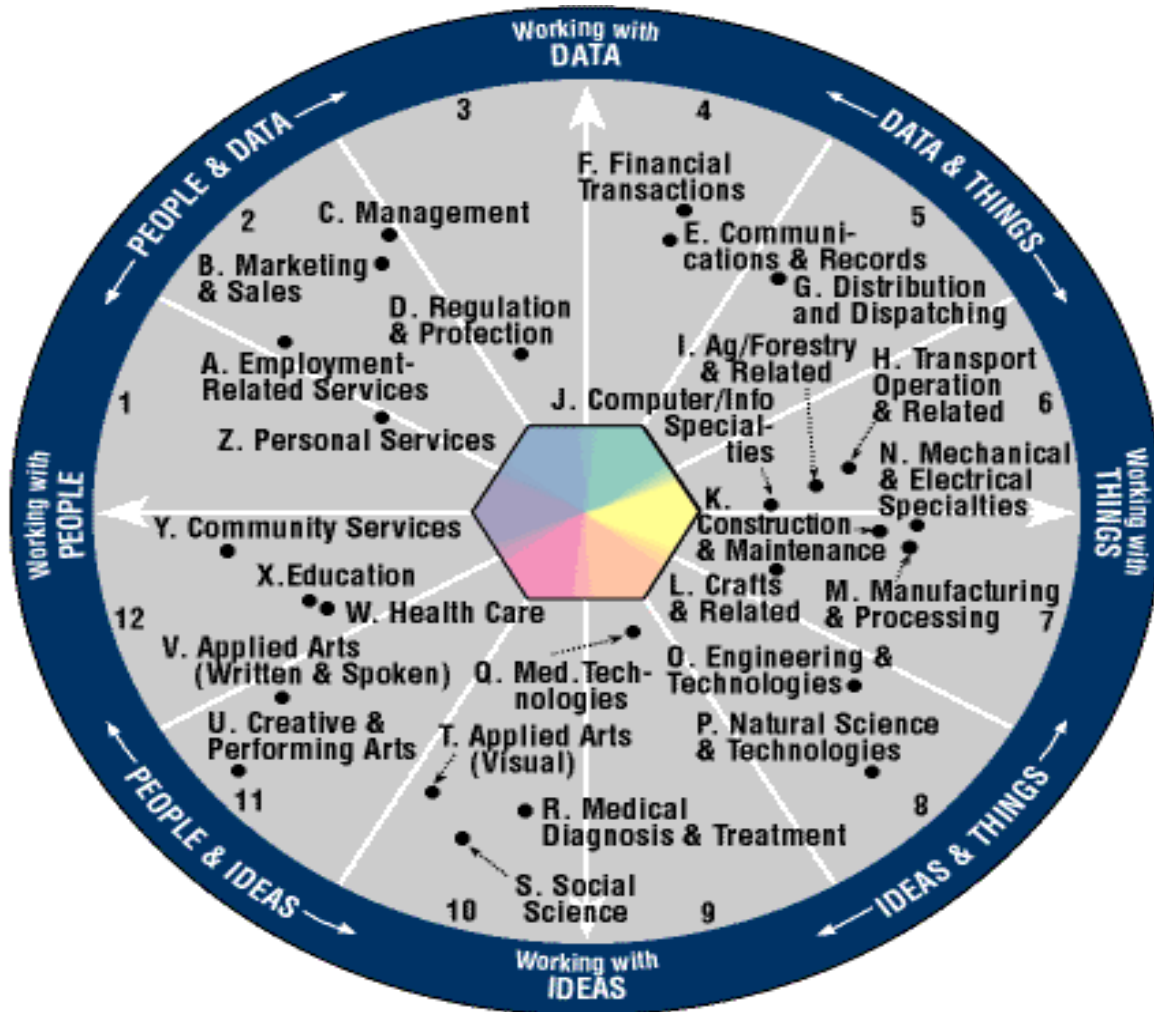
- Partnership between Mayor, LBCC, Port of Long Beach, and LBUSD
- Three-year program for high schools made possible by LBCC grants.



Selected CTE Partnerships

- **SB 70 Grants**
 - Purpose: Improve CTE at both the community college and secondary levels.
 - Areas: Advanced Manufacturing, Construction, Transportation / Logistics, and Technical Preparation
- **Port of Long Beach**
 - Infuse Port-related lessons into the curriculum.
- **Goodwill Industries**
 - Certified Nursing Assistant Program
 - Currently has 20 participants.
- **DeVry University**
 - “Passport to College” program includes 40 students.
 - Free courses in Algebra, Software, Business, etc.
- **Project RISE**
 - \$350,000 grant to help 30 high school students enter the early childhood development workforce.

ACT EXPLORE



Strategy: Implement ACT EXPLORE alongside CollegeEd curricula in 7th grade.

Provide the ACT EXPLORE to all LBUSD 8th graders starting next year.

ACT EXPLORE

- Helps 8th graders with:
 - High School Transition
 - ACT Preparation
 - College Planning
 - **Career Exploration**

WORLD-OF-WORK MAP

- 6 Career Clusters
 - Administration & Sales
 - Business Operations
 - Technical
 - Science & Technology
 - Arts
 - Social Service
- 26 Career Areas

MISSION

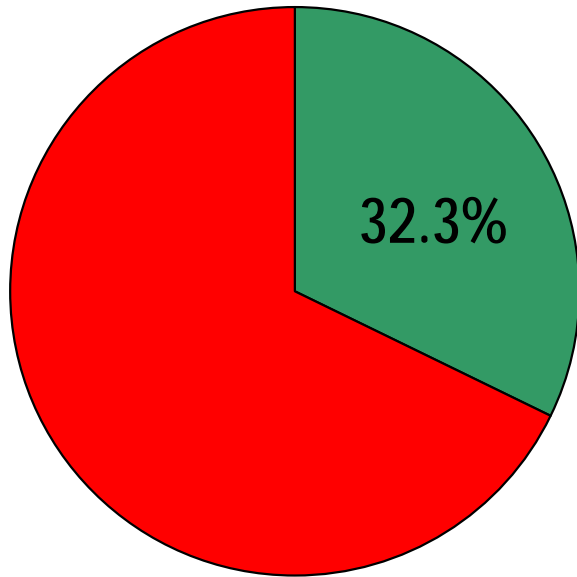
To provide an innovative program which introduces students to academic and technical experiences through LBUSD, ROP, LBCC, and CSULB coursework, in partnership with local business and industry.

- **Basic Program**
 - 6th through 12th Grade School
 - “Academy” concept and project-centered experiences
- **Four Career Pathways under Consideration**
 - Health and Medical
 - Goods Movement and Global Logistics
 - Law Enforcement, Legal Services, and Forensics
 - Engineering
- **Strategic Alignment**
 - Part of the Facility Master Plan
 - Next Step: Formal Presentation to Executive Staff

The next seven slides provide historical district-wide student data.

A-G College Entrance Requirements

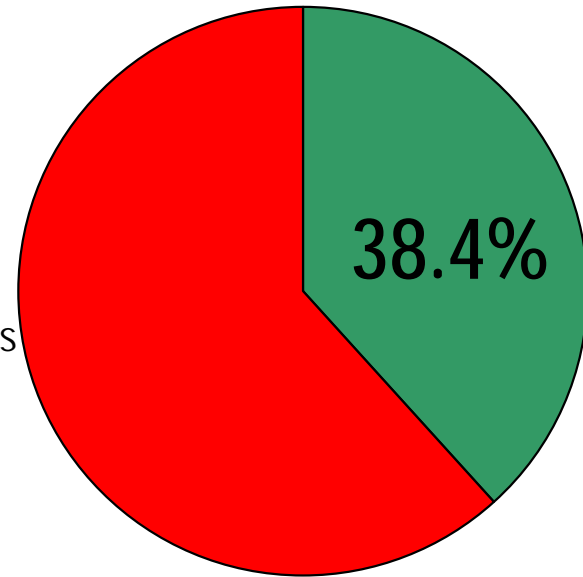
Class of 2006



GROWTH

6.1 percentage points

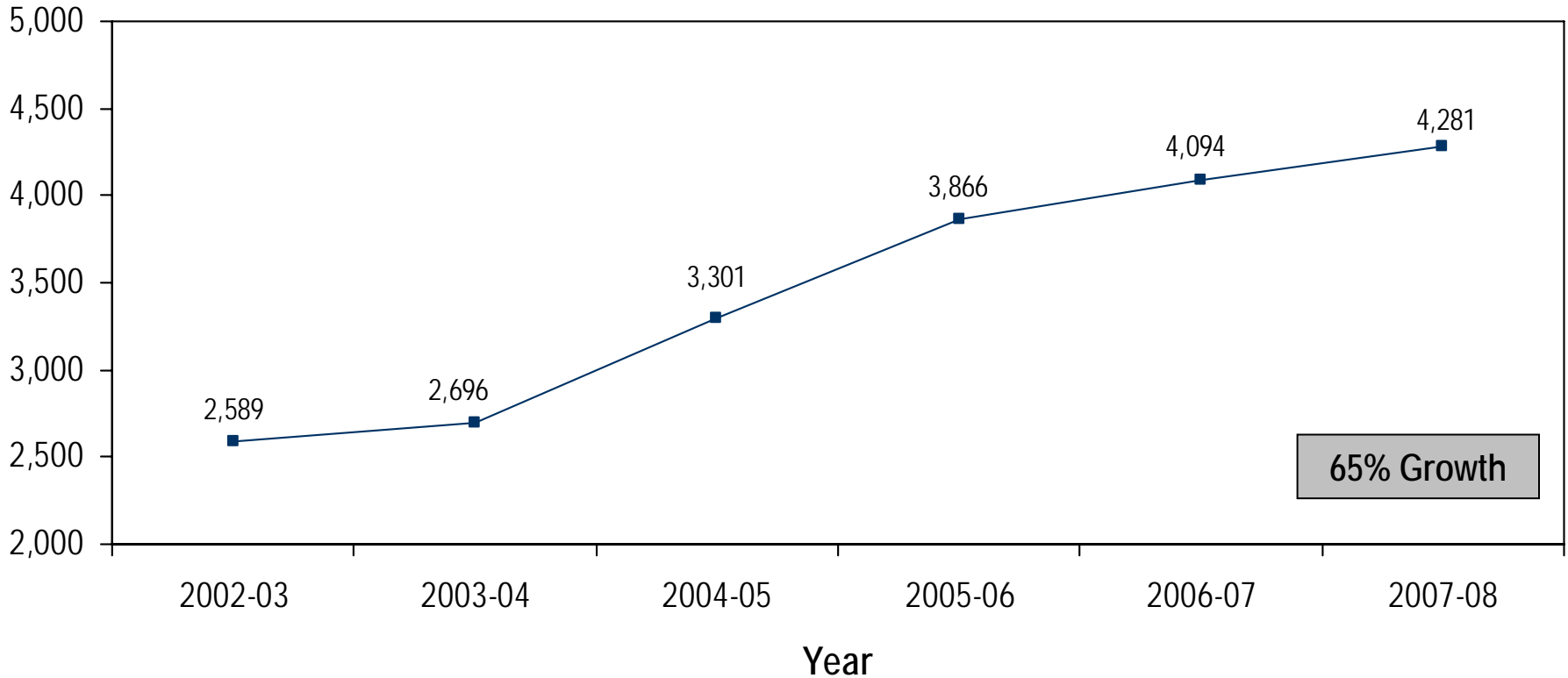
Class of 2007



- Green represents the percentage of graduates completing the A-G College Entrance Requirements.
- State data for 2007 are currently unavailable, but between 2004 and 2006, the average was 35%.
- Reminder: For A-G completion, students must receive a C grade or higher in all eligible courses.

Advanced Placement Enrollment

Districtwide Student Enrollment in AP Courses



- African American enrollment increased by 85% and Latino enrollment by 90%.
- Latinos now make up the largest ethnic subgroup in AP course enrollment.
- During this expansion, the AP passing rate has stayed above 50%.

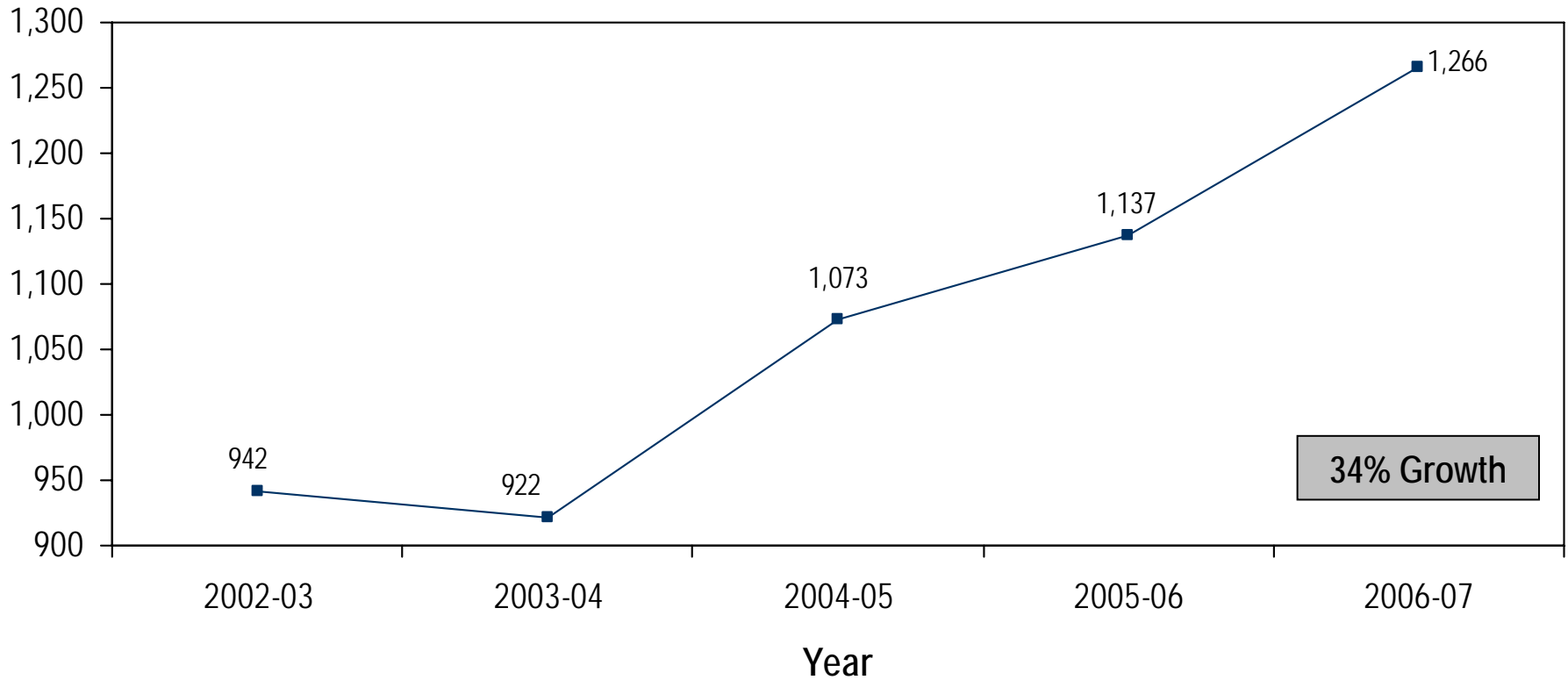
Advanced Placement Test Taking

% of 11 th and 12 th Graders Taking an AP Test			
	2003-04	2006-07	% Growth
Long Beach	16%	24%	8%
California	20%	22%	2%

- Long Beach has seen faster growth in AP test taking than the state overall has.
- Whereas Long Beach trailed California in 2003-04, it exceeded the state average in 2006-07.
- Data for 2002-03 were unavailable and those for 2007-08 have yet to be completed.

Four-Year College Enrollment

Enrollment in Four-Year College after High School Graduation



- Source: National Student Clearinghouse. Includes four-year public and private institutions in the NSC.
- In 2006-07, 27% of high school graduates enrolled in a four-year college—up from 22% in 2002-03.
- In 2006-07, over 85% of graduates who enrolled in a four-year college went to a public institution.
- The figures may *undercount* enrollments, since NSC relies on student verifications, which are imperfect.

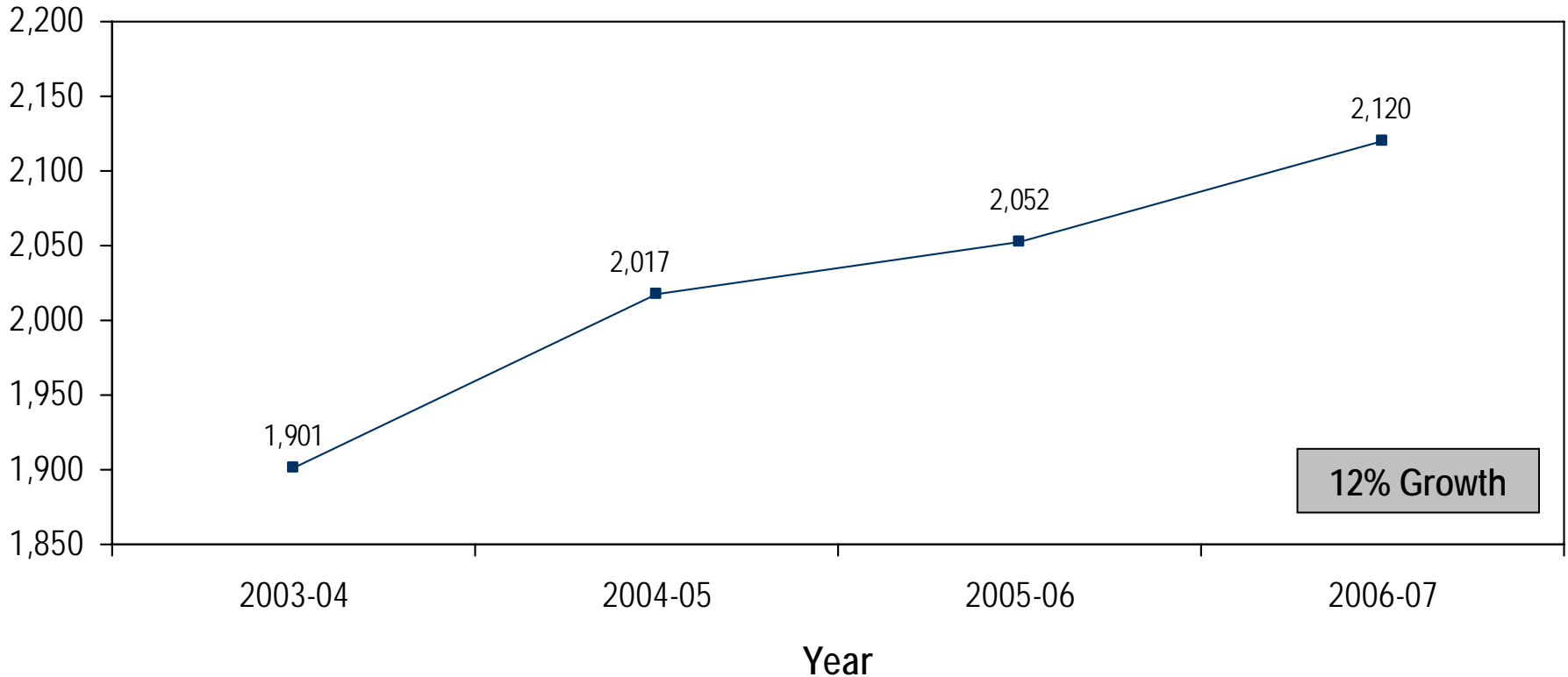
CSULB Admissions Data

	2003	2007	% Growth
Applications	1,011	1,468	45%
Admissions	750	1,095	46%
Enrollment	367	479	31%

- The number of Cabrillo High School students earning admissions increased by 195%.
- The number of Jordan High School students earning admissions increased by 78%.
- All LBUSD high schools saw increases in admissions, with 17% being the minimum growth.

SAT I Participation

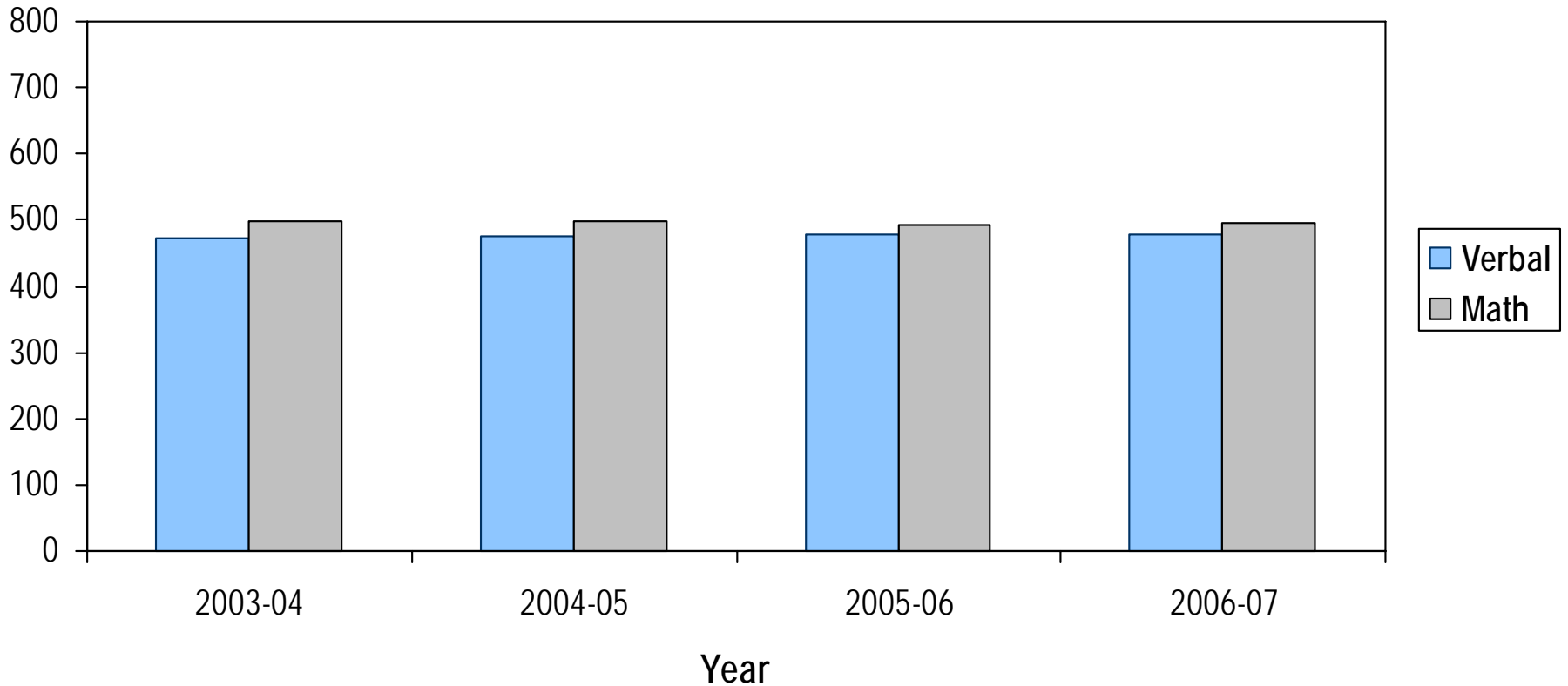
Number of Students Taking the SAT I



	2003-04	2004-05	2005-06	2006-07
12 th Grade Enrollment	6,424	6,506	6,537	6,154
Students Tested as % of Enrollment	29.6%	31.0%	31.4%	34.5%

Average SAT I Scores

Average Scores on the Verbal and Math Sections of the SAT I



- As student test taking grew by 12%, average scores remained essentially the same.
- The average score on the verbal section increased slightly (6 points).

The next two slides provide information about the metrics and target goals established to measure the progress of the Academic & Career Success Initiative

Initiative Advisory Committee

PURPOSE

To develop districtwide goals and milestones that will measure the progress of the Academic Success Initiative.

Provide guidance on:

- Which metrics reflect college and career readiness;
- How metrics should be reported to the community; and
- When the reports should be issued.

District staff support:

- Independently research the metrics proposed by the Advisory Committee.
- Ensure alignment with the LBUSD Strategic Plan.

COMMITTEE COMPOSITION

60 Total Members

- Students, Parent, Teachers, Administrators, and Community Partners

Diverse Representation

- Long Beach Council PTA
- Teachers Association of Long Beach
- Centro Community Hispanic Association
- Concerned African American Parents
- NAACP
- District Community Advisory Committee
- District English Learner Advisory Comm.
- California State University, Long Beach
- Long Beach City College
- Californians for Justice
- Boeing Corporation

Targets for Academic & Career Success

Category	Metric	Current Figure	2013 Target
Leading Indicator	5 th Grade ELA Proficiency	44%	70%
	5 th Grade Math Proficiency	56%	70%
	8 th Grade ELA Proficiency	38%	55%
	Gen. Math Proficiency in 8 th Grade	25%	50%
	8 th Grade Algebra I Enrollment	30%	60%
	8 th Grade Algebra I Proficiency	68%	75%
	CAHSEE in 10 th Grade	74%	85%
	Graduation Rate	80%	90%
Postsecondary Eligibility	A-G Completion Rate	38%	60%
	Performance on SAT and ACT	<p style="text-align: center;">Collect More Data Monitor for Growth Determine Targets Later</p>	
College/Career Readiness	AVID Participation (MS and HS)		
	AP Enrollment and Passage		
	Early Assessment Program		
	College Admissions		

To support the personal and intellectual success of every student, every day.